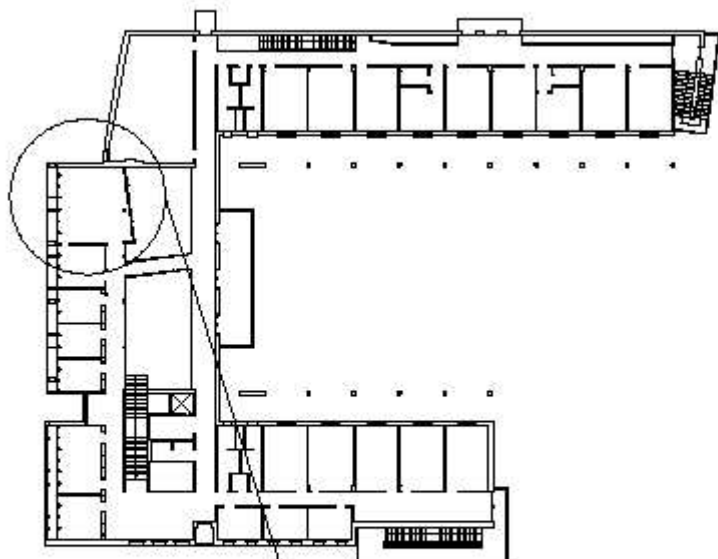
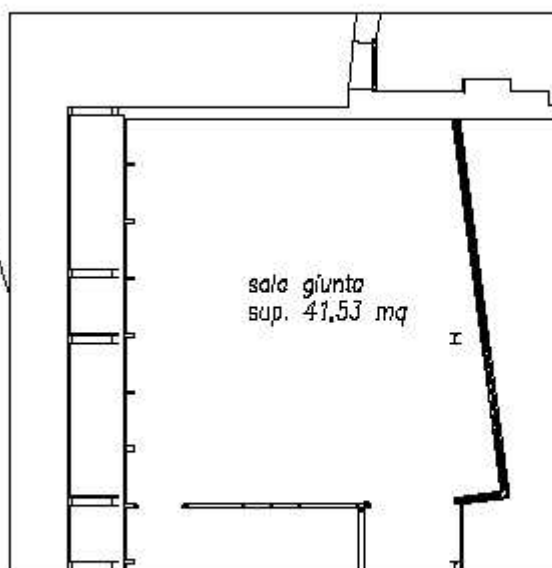


*allegato "A"*

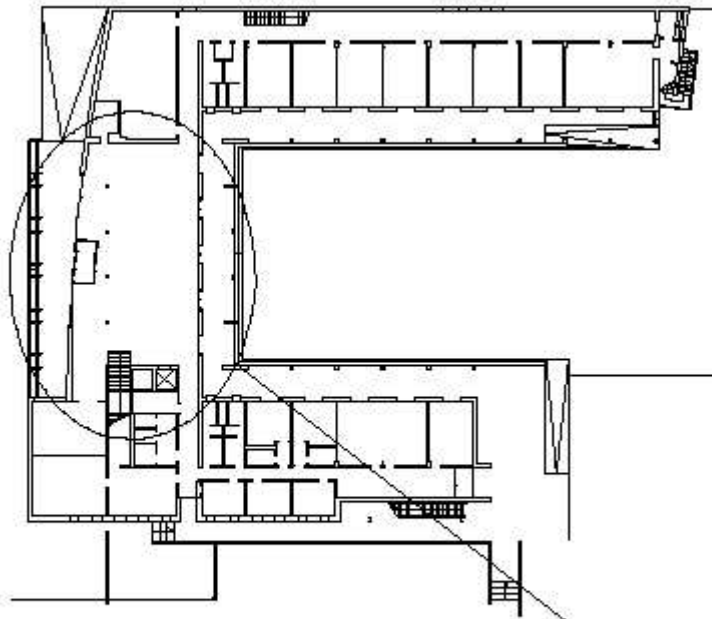


*piano primo*

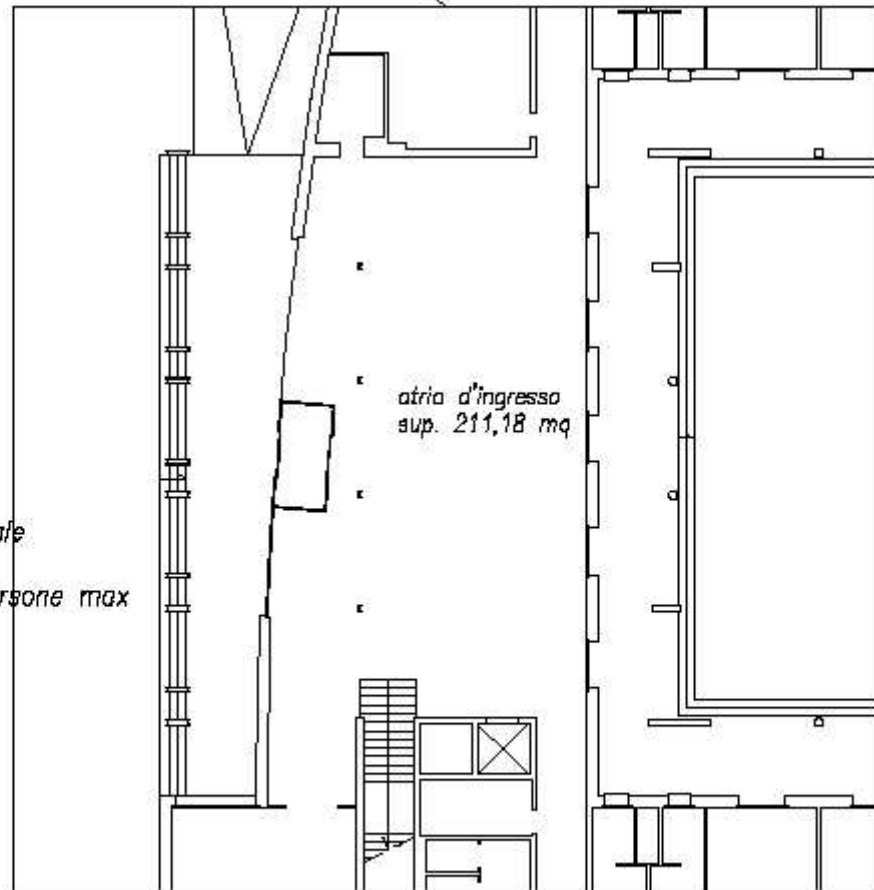
*Palazzo Municipale  
sala giunta  
capienza: 25 persone max*



*allegato "B"*



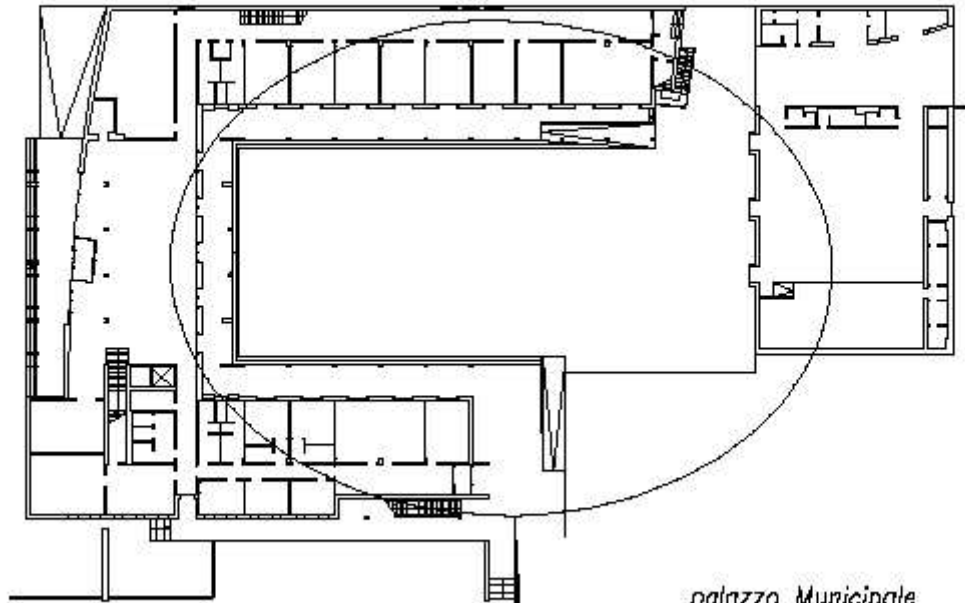
*piano terra*



*atria d'ingresso  
sup. 211,18 mq*

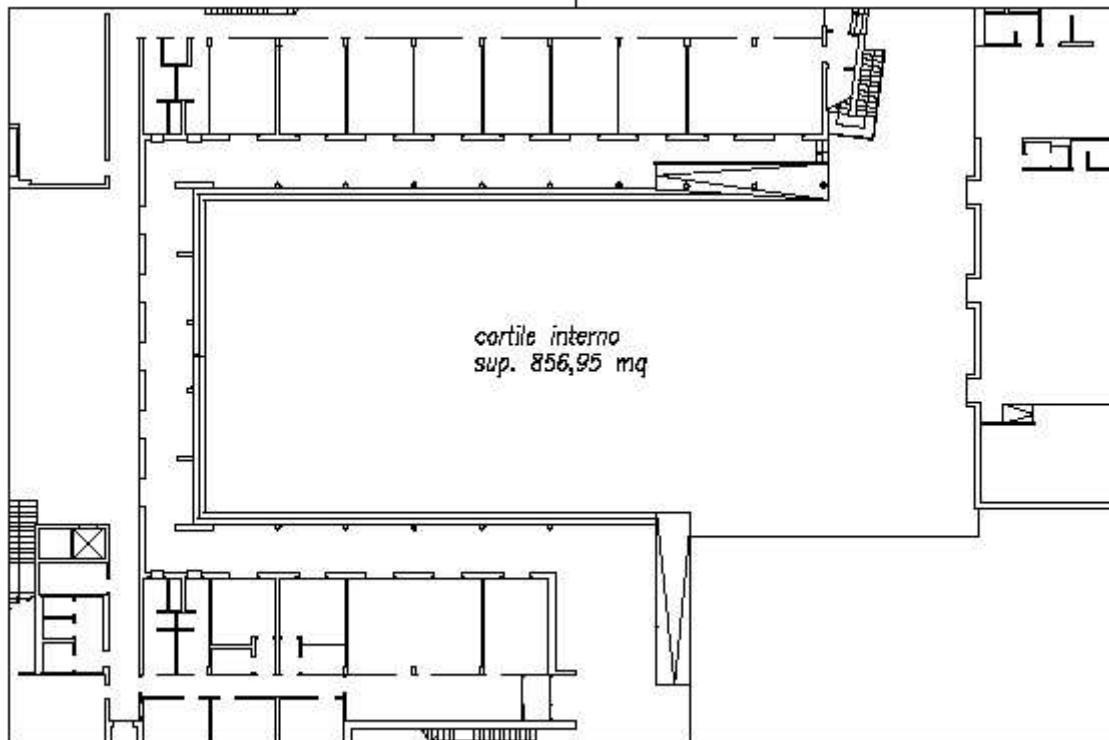
*Palazzo Municipale  
atria  
capienza: 70 persone max*

*allegato "C"*



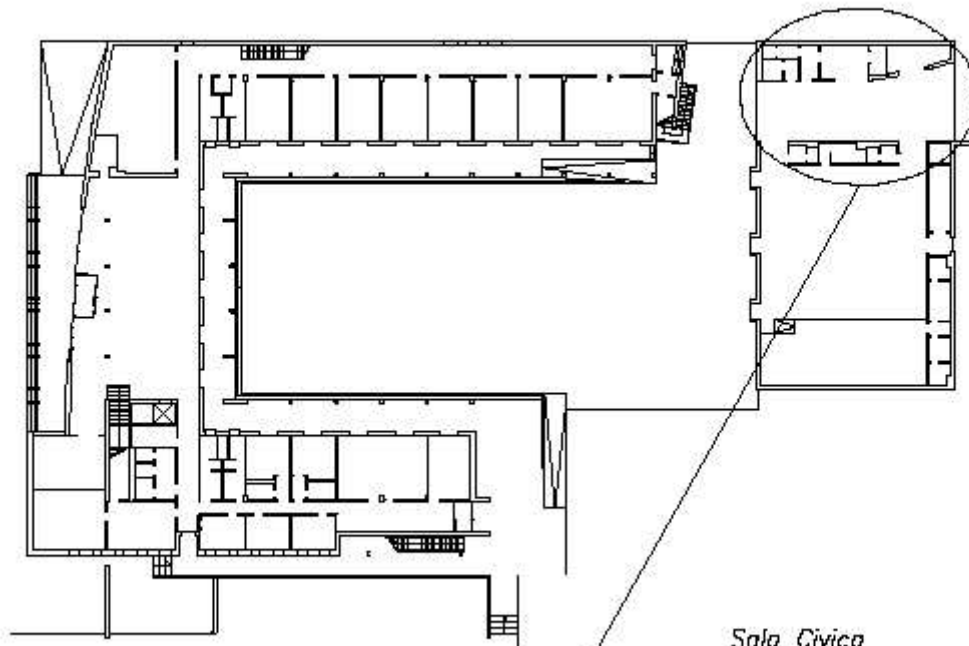
*piano terra*

*palazzo Municipale  
cartile interno  
capienza: 150 persone max*



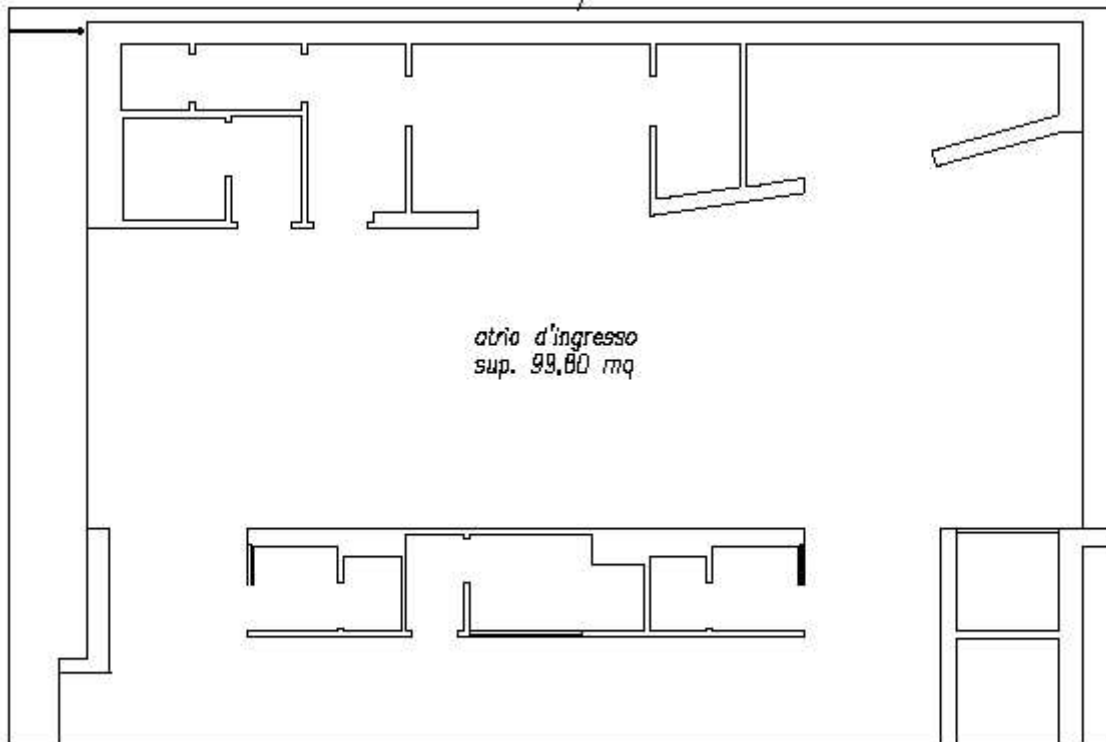
*cartile interno  
sup. 856,95 mq*

*allegato "D"*



*piano terra*

*Sala Civica  
atrio  
capienza: 80 persone max*



*atrio d'ingresso  
sup. 99,80 mq*

